



Mild Cognitive Impairment Testing

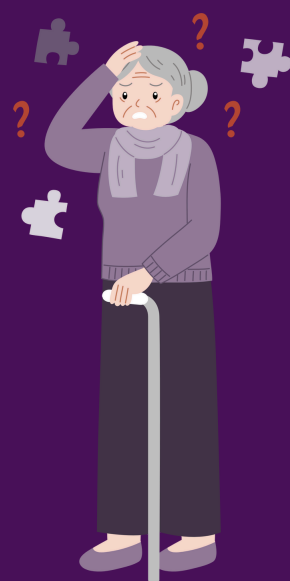


What is Alzheimer's Disease?

- A progressive brain disorder that affects memory, thinking, and behavior.
- It's the most common cause of dementia in older adults.
- Symptoms worsen over time, impacting daily life and independence.

Early Signs & Symptoms

- A progressive brain disorder that affects memory, thinking, and behavior.
- It's the most common cause of dementia in older adults.
- Symptoms worsen over time, impacting daily life and independence.



Benefits of Early Testing



- **Clarification of Symptoms:** Determines whether memory issues are due to Alzheimer's or other treatable conditions.
- **Access to Treatments:** Enables timely use of medications that may slow disease progression.
- **Planning and Support:** Allows families to make informed decisions about care and future arrangements.
- **Lifestyle Adjustments:** Provides an opportunity to adopt changes that may help preserve cognitive function.

How significant early cognitive testing can be ?

- **Early Diagnosis:** Identifying cognitive decline early helps in diagnosing conditions like Alzheimer's or other dementias, which is crucial for timely intervention.
- **Treatment Options:** The sooner a diagnosis is made, the sooner treatment options, including medication and therapy, can be implemented to slow progression and improve quality of life.
- **Cognitive Rehabilitation:** Early detection enables individuals to engage in cognitive therapies that may help maintain cognitive function for a longer period.



Schedule your appointment today!

phone: 832-879-2107

web: www.tranquilitybhc.com